




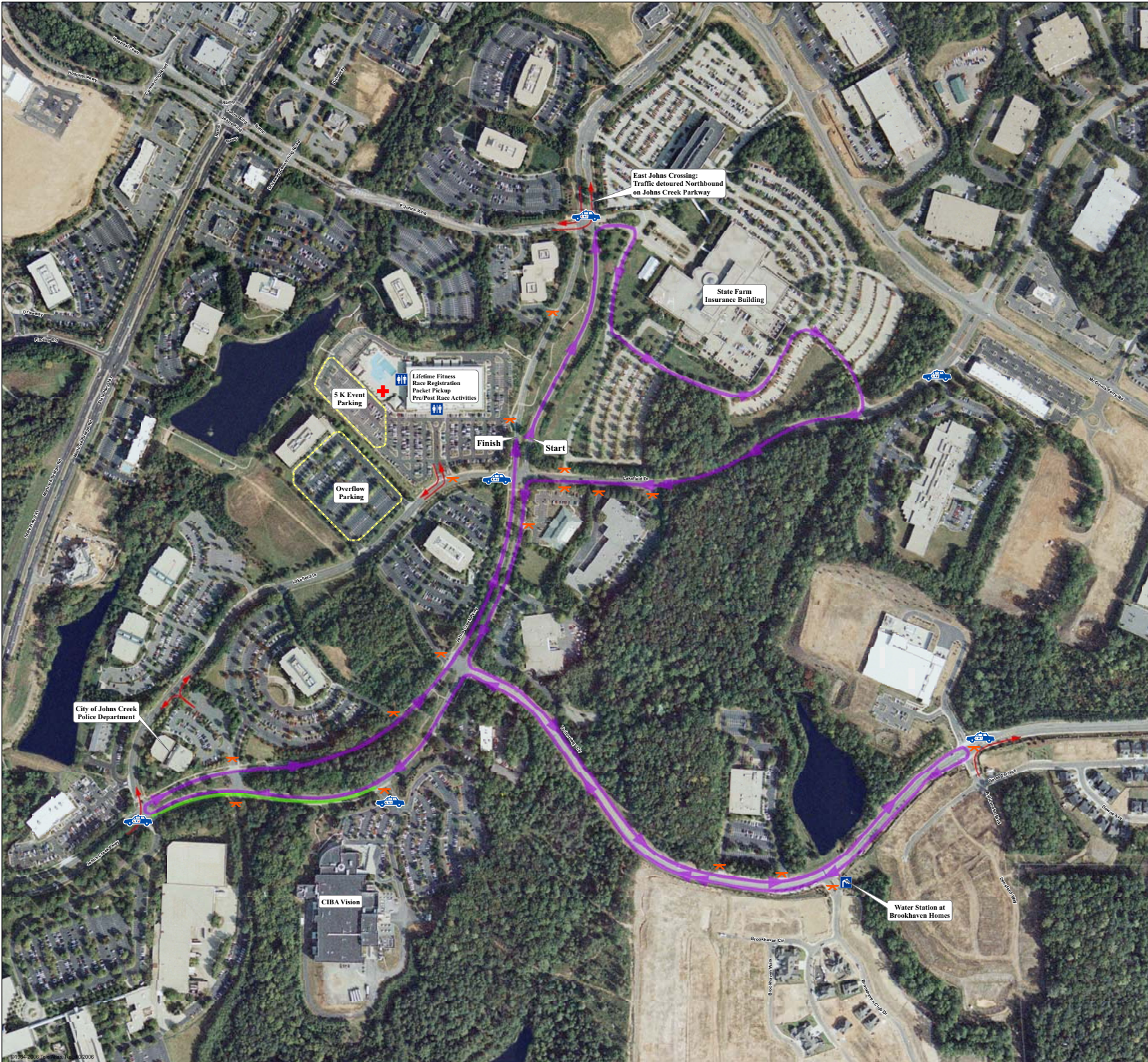
**City of Johns Creek**  
**"Go Green - Be Green" 5K Race**  
[www.rungeorgia.com](http://www.rungeorgia.com)

**Saturday March 14**

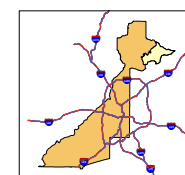
**6:45 AM Registration Begins**  
**7:30 AM Race Route Roads Close**  
**8:00 AM Race Starts**

**Legend**

-  First Aid
-  Police Location
-  Restroom
-  Traffic Control
-  Water Station
-  5K Race Route
-  Traffic Detour
-  Open Lane to CIBA Vision
-  Parking Area



0 80 160 320 480 640 Feet  
 1 inch equals 150 feet



©2006 City of Johns Creek, Georgia. All rights reserved.  
 This map is provided for informational purposes only. It is not intended to be used as a legal document. The City of Johns Creek is not responsible for any errors or omissions on this map. The City of Johns Creek is not responsible for any damages or injuries resulting from the use of this map.